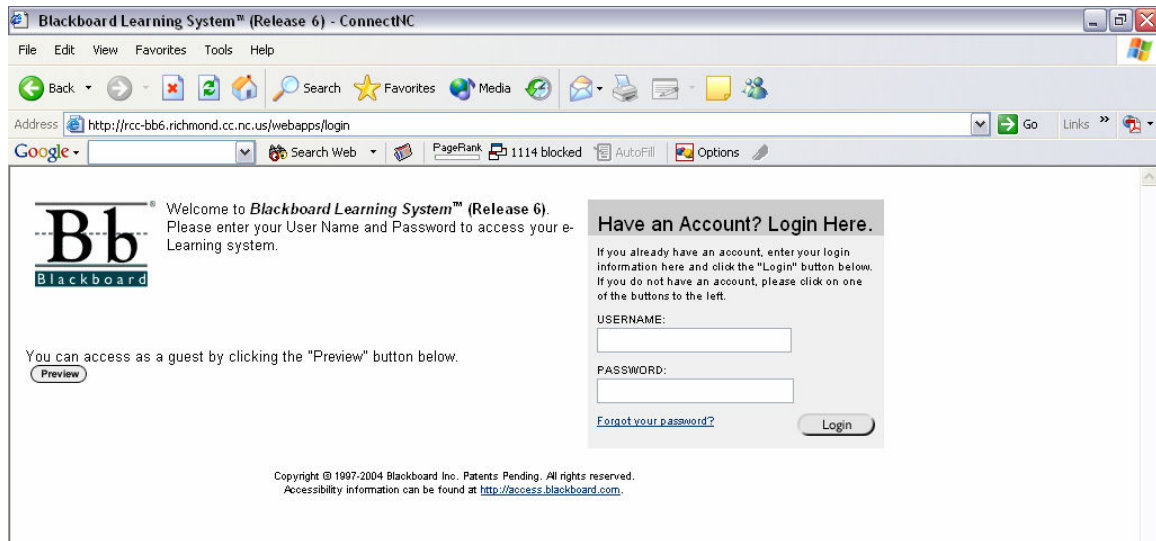


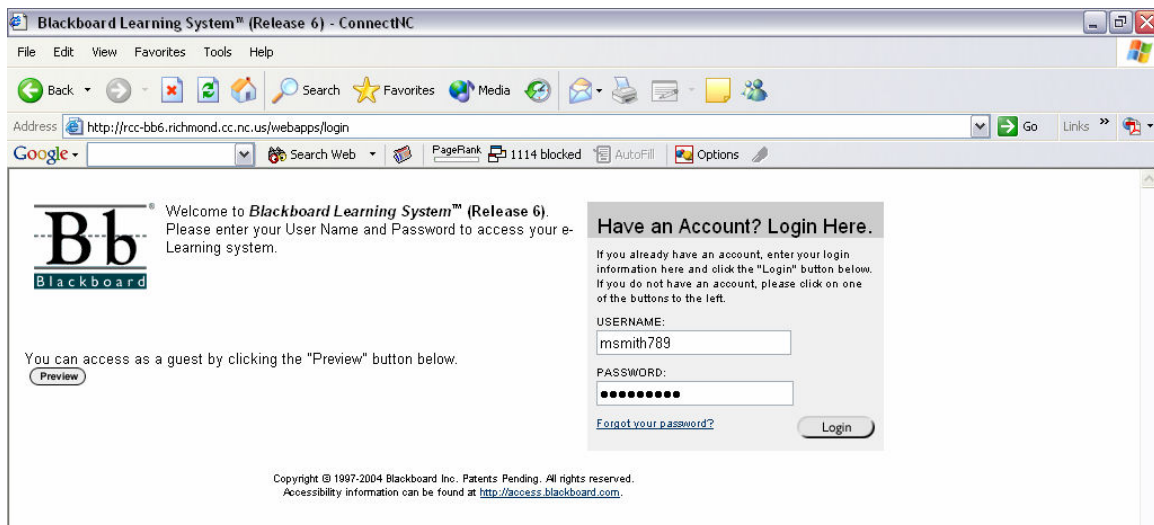
## Logging In

Once you've reached the Blackboard site, you can login by clicking on the login button. You should then see the following screen:



In the first box you should enter your Blackboard username. Your username will be in the form of your **first initial, last name, and the last three digits of your Student ID number**. For example, Mary Smith, Student ID 3456789 would enter **msmith789**. **(Note: Previously RCC used Social Security numbers to build usernames and passwords. Beginning with the Fall 2006 semester, Social Security Numbers are no longer used.)**

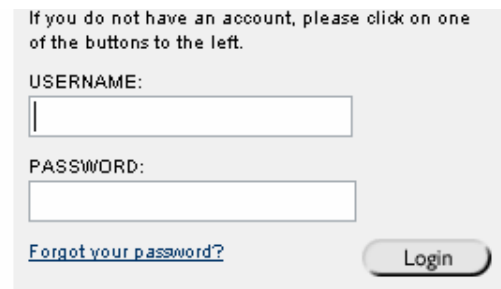
You would enter your password in the second box. Initially, your password is the same as your username. You can then click the **Login** button (or just press **Enter**).



**IMPORTANT: Use only lower case to enter your username and password. If you do not, your password will fail.**

If your login fails, you will receive an error message (see screen shot, right).

You should try to login again. If you continue getting an error, contact your instructor.



**Could not login. The specified user name does not exist in the system.**